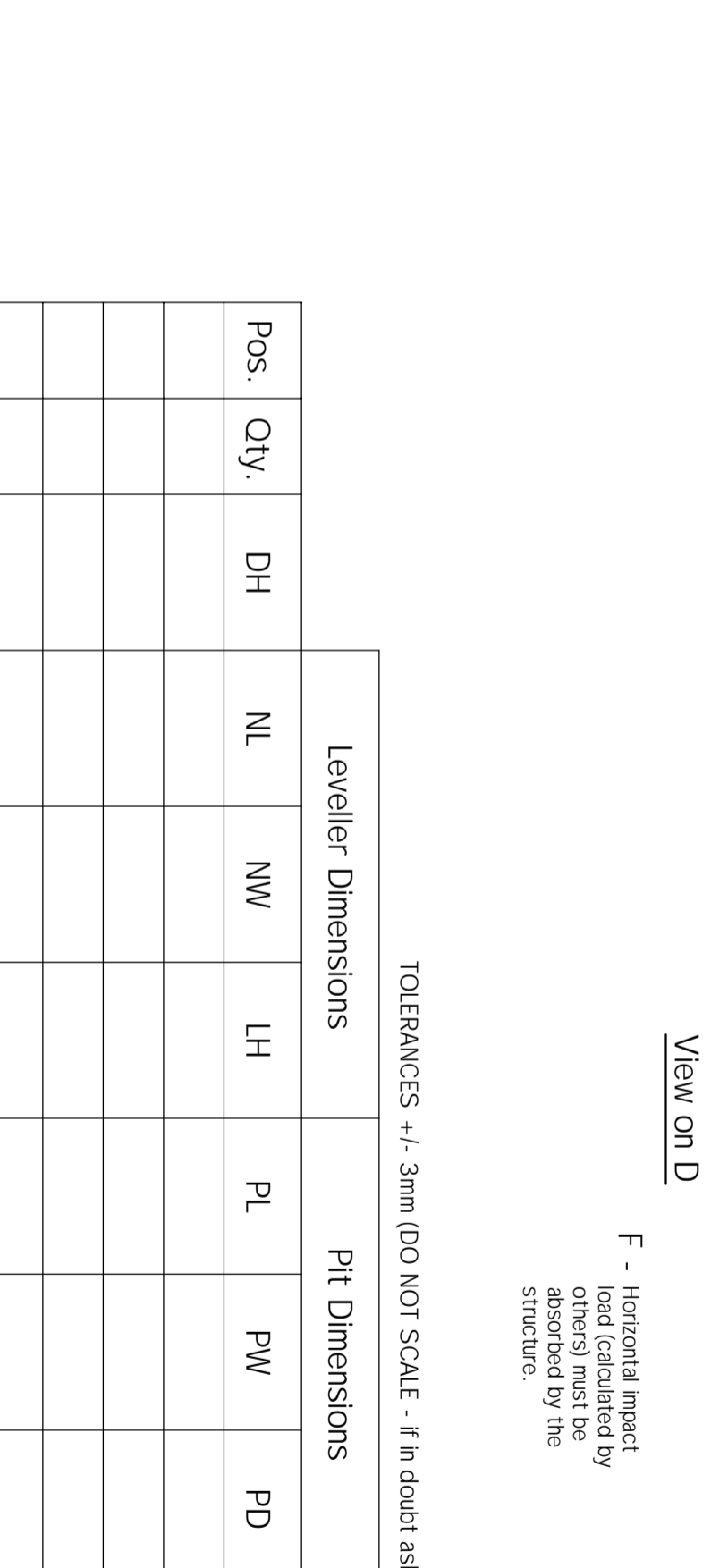
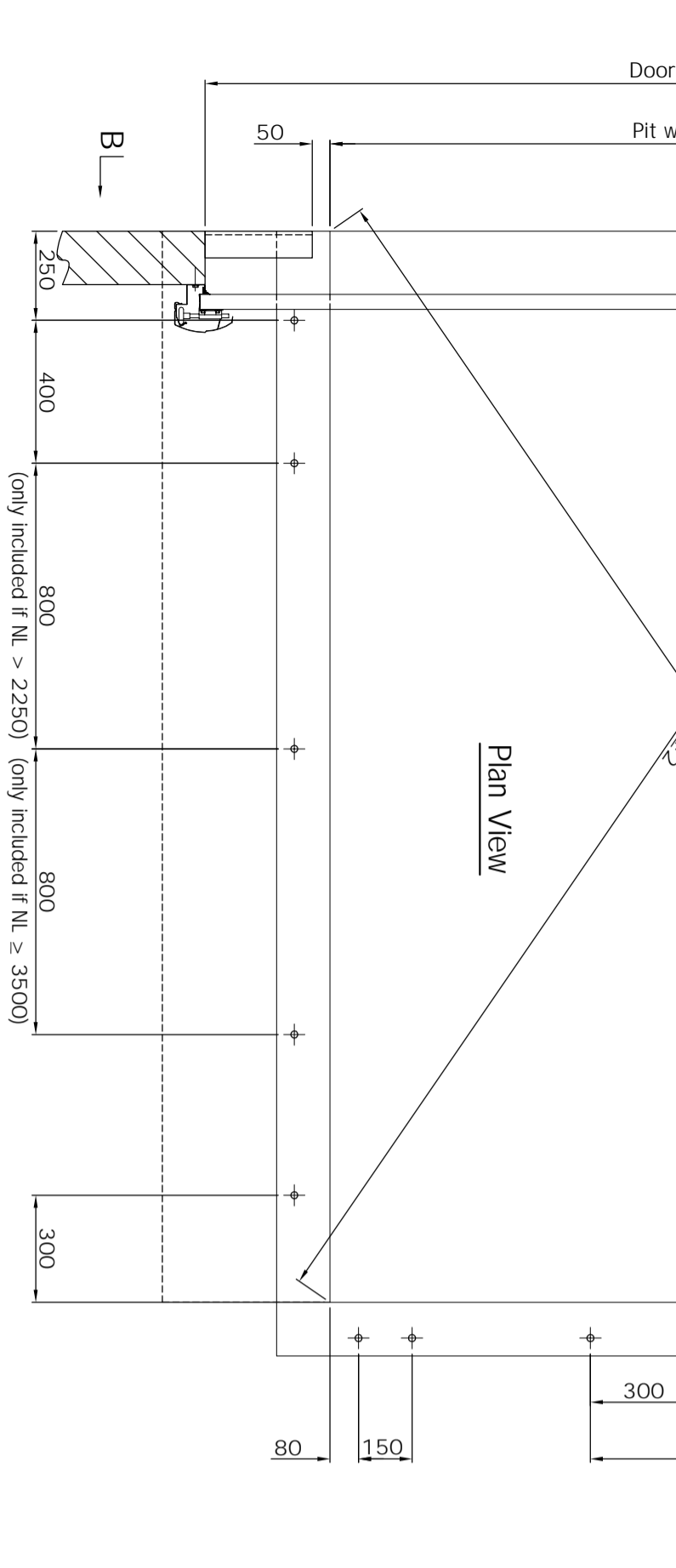
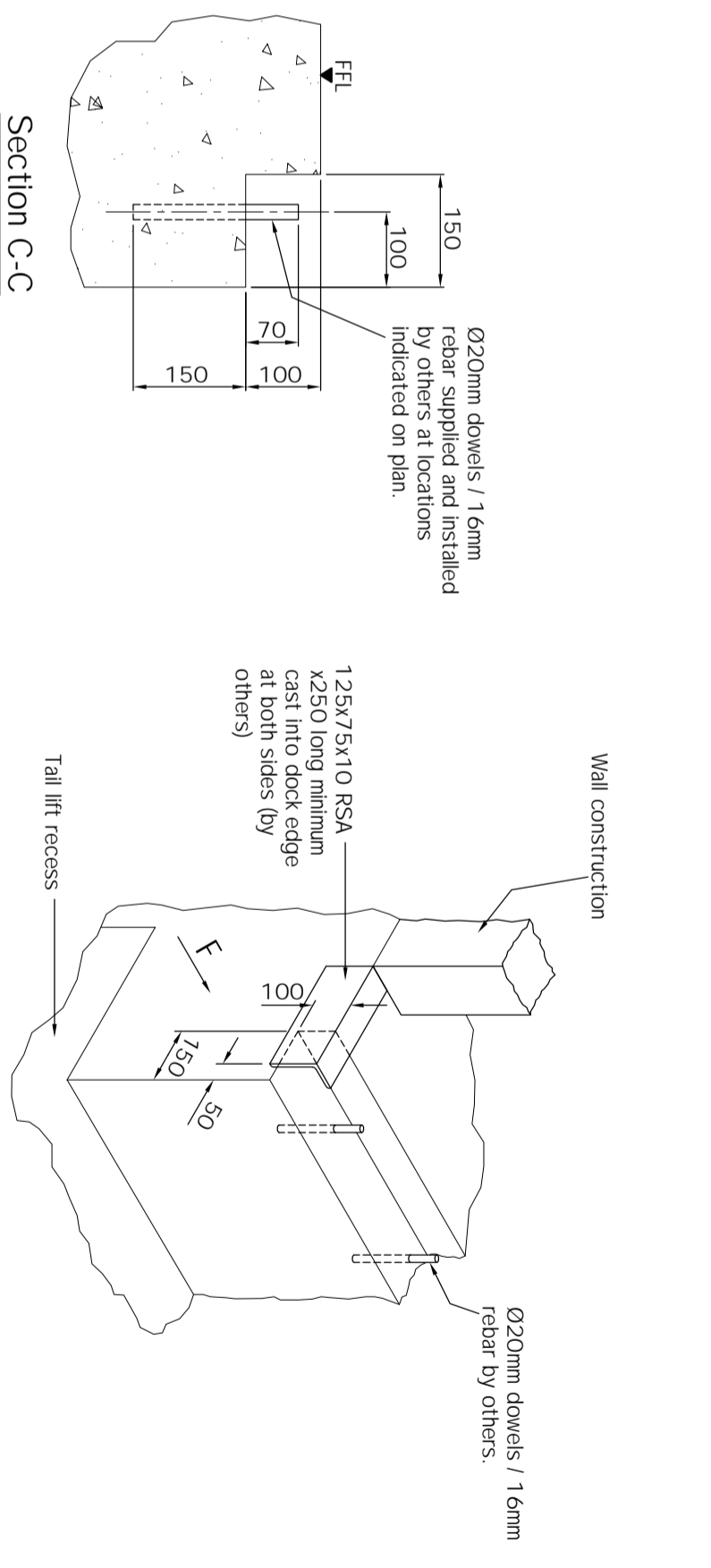
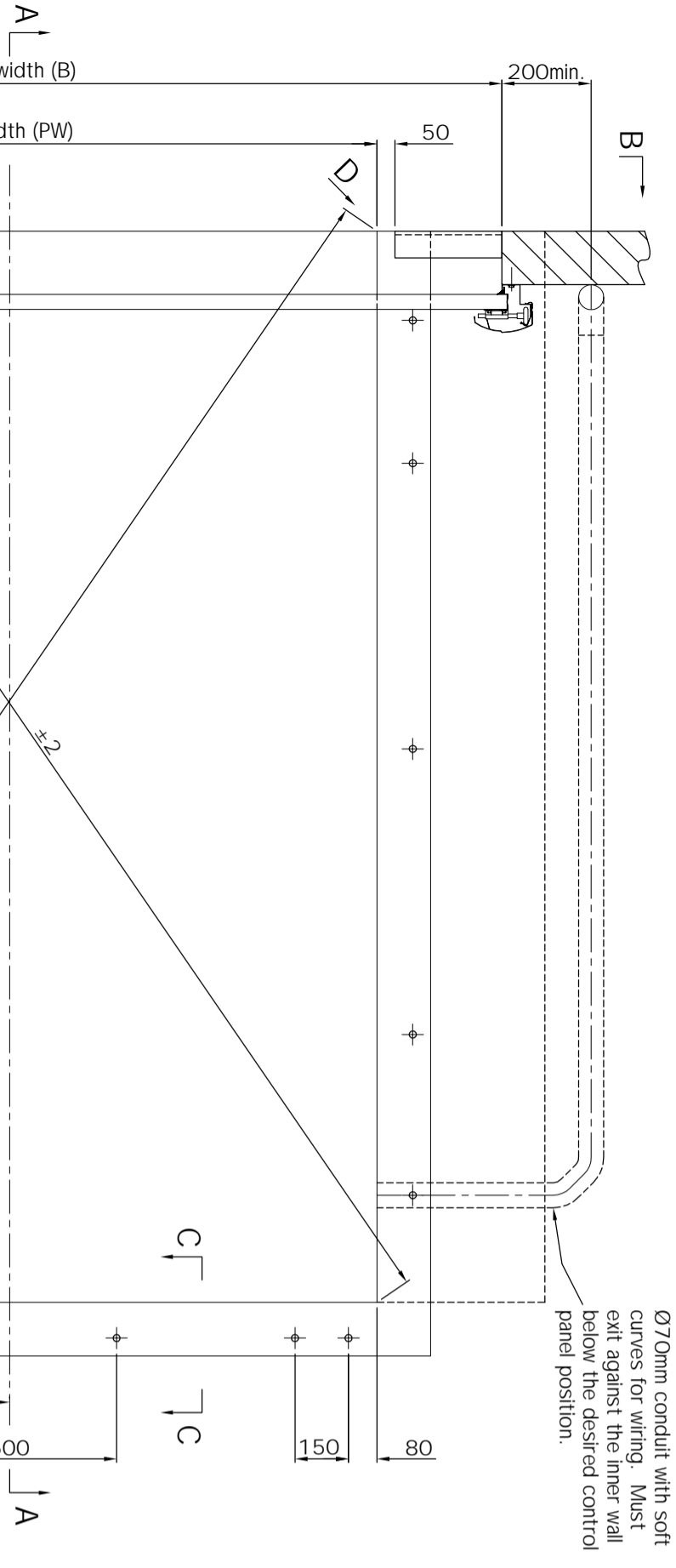
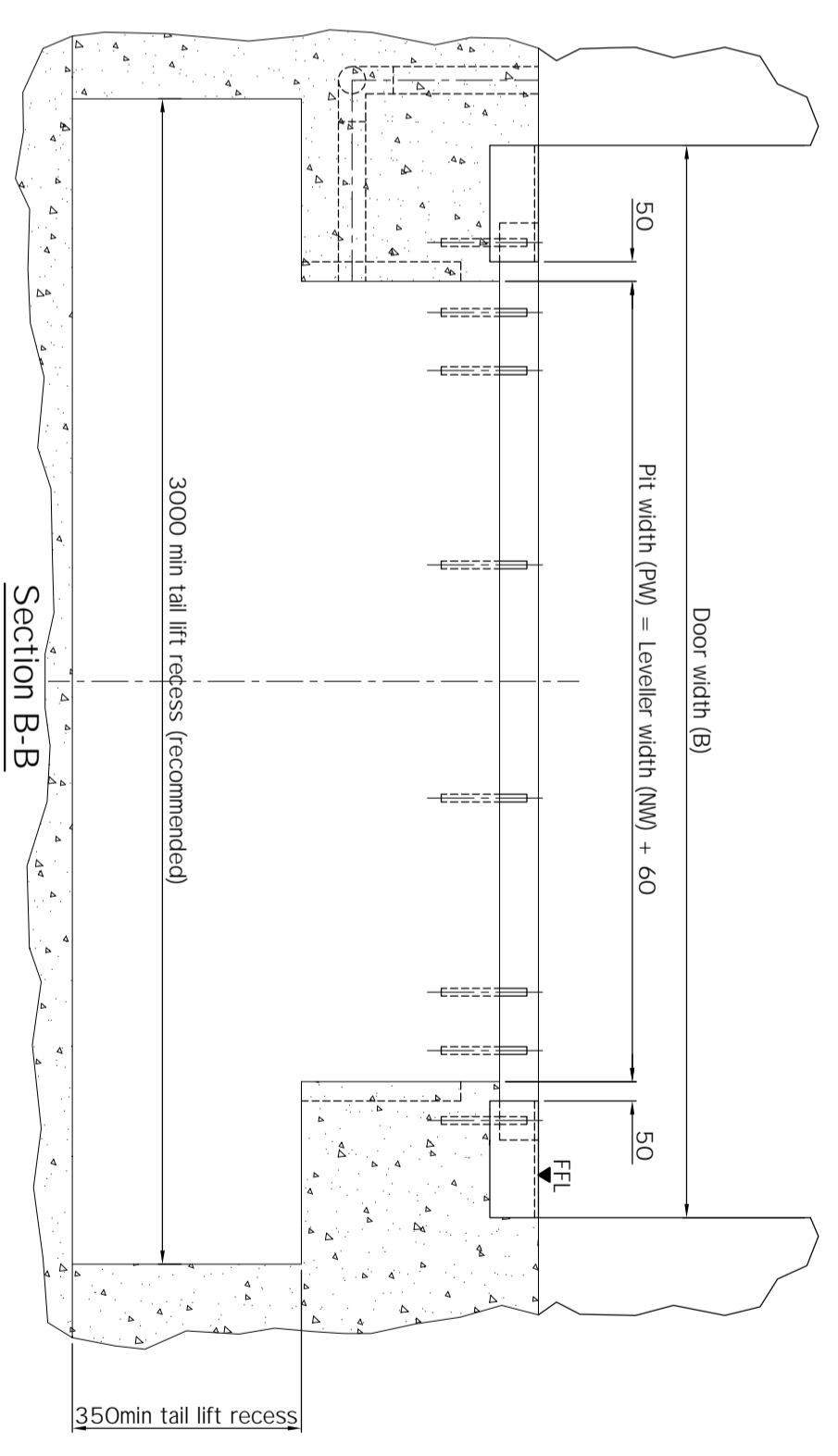
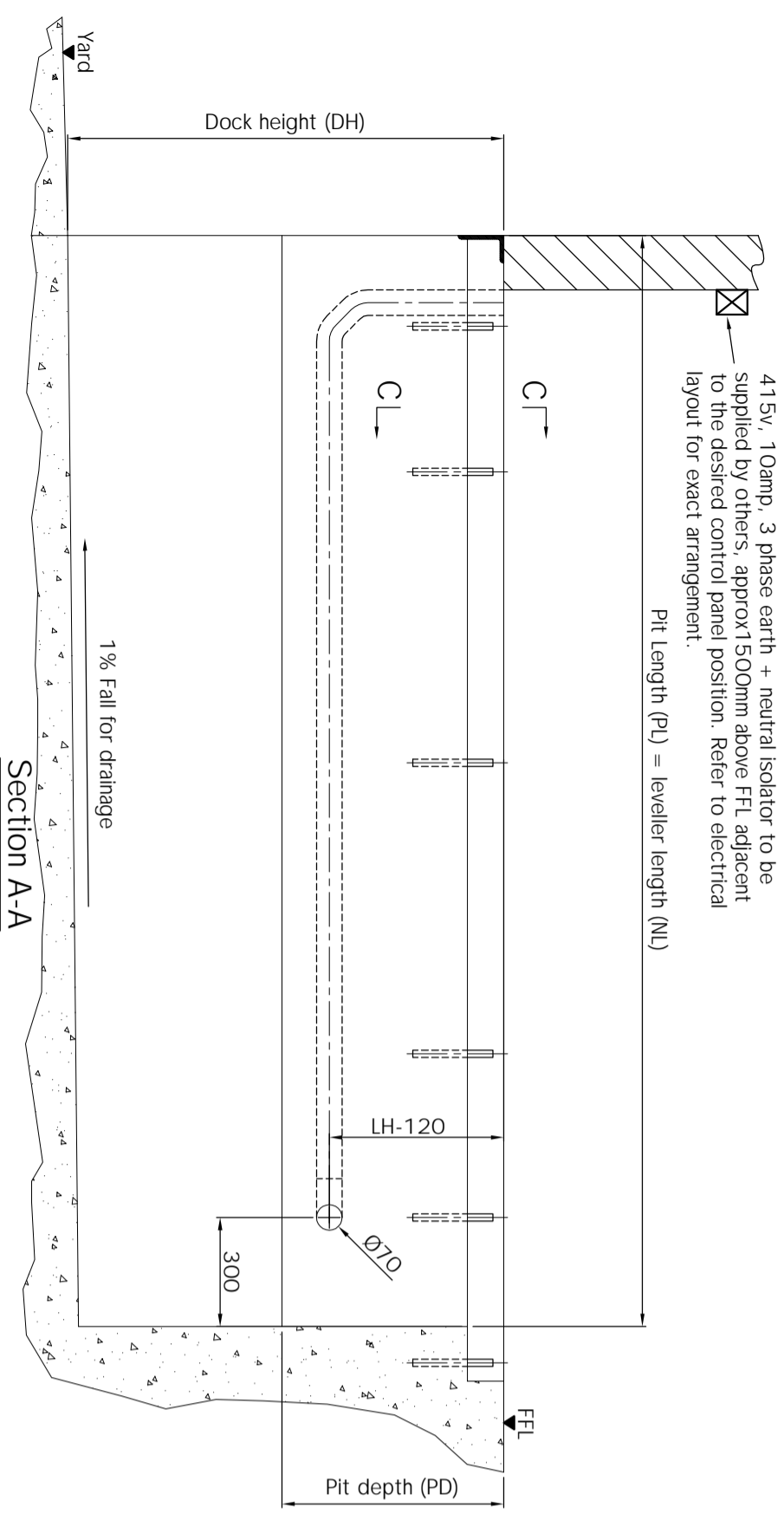


415V, 10amp, 3 phase earth + neutral isolator to be supplied by others, approx 1500mm above FFL adjacent to the desired control panel position. Refer to electrical layout for exact arrangement.

Pit Length (PL) = leveller length (NL)



TOLERANCES +/- 3mm (DO NOT SCALE - if in doubt ask)

| Pos. | Qty. | DH | NL | NW | LH | PL | PW | PD |
|------|------|----|----|----|----|----|----|----|
| | | | | | | | | |
| | | | | | | | | |
| | | | | | | | | |
| | | | | | | | | |

ASSA ABLOY
 ASSA ABLOY Entrance Systems Ltd
 Industrial Door and Docking Solutions
 7 Churchill Way . 35A Business Park . Chapeltown . Sheffield . UK . S35 2PY
 Tel: +44 (0)114 257 4330 Fax: +44 (0)114 257 4399

TITLE: Pit setting out details for SwingDOCK leveller with 6T single axle load. Installation type T, H or W with tail lift.

CLIENT:

SITE:

DRAWING STATUS: PRELIMINARY FOR APPROVAL

CONSTRUCTION: AS BUILT

REV. BY DATE COMMENT

SPECIFICATION: SwingDOCK

INSTALLATION TYPE: T H W

Pre-install frame (type H & W only)

LIP MATERIAL: Steel Aluminium

LIP LENGTH: 400mm 500mm

LIP OPTIONS:

- Standard
- Tapered (100mm each side)
- Fold Down Segments (1 each side)
- Bevelled (Steel Lip - 40mm)
- Bevelled (Steel Lip - 100mm)

FINISHES:

- Standard Ral 5010 - Blue
- Other (specify Ral / BS colour)
- Hot Dip Galvanized

ADDITIONAL OPTIONS:

- EPDM Seals (to platform perimeter)
- 40mm Platform Insulation
- Anti-slip Surface Protection
- Noise Reduction
- Low Temperature Oil
- Environmental Oil

CONTROL PANEL:

- 950 L 950 LA
- 950 DL 950 DLA
- 950 DLS 950 DLSA

CONTROL OPTIONS:

- Integrated Door Control
- Integrated Shelter Control
- Auto Leveller Retraction

BUFFER OPTIONS:

- 400x80x70 + 10mm Plate
- 500x250x90 + 15mm Plate
- 500x250x140 + 15mm Plate
- Floating (EBF)
- Height Adjustable (EBH)

NOTES:

F - Horizontal impact load (calculated by others) must be absorbed by the structure.

DRAWN BY:

CHECKED BY:

DATE:

DRAWING NO. REV.