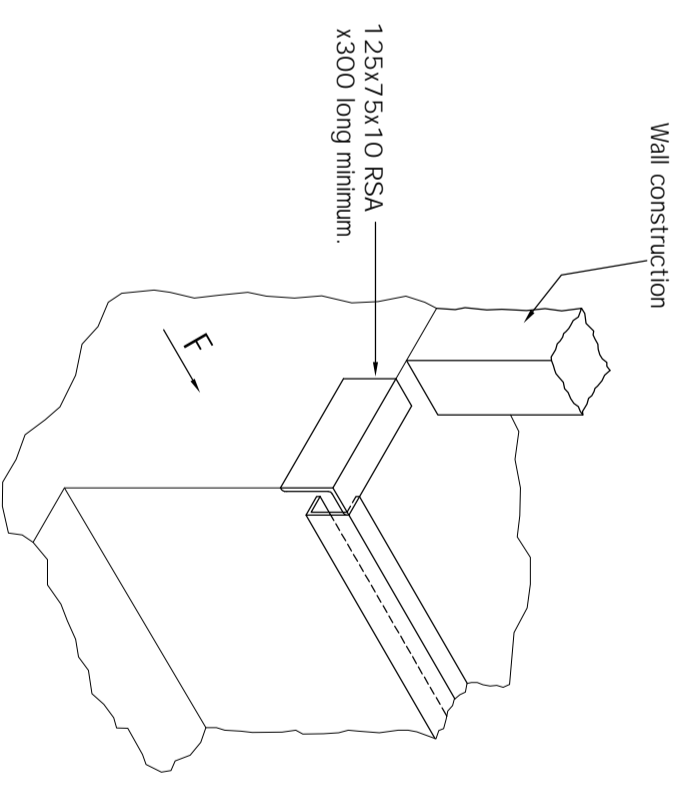
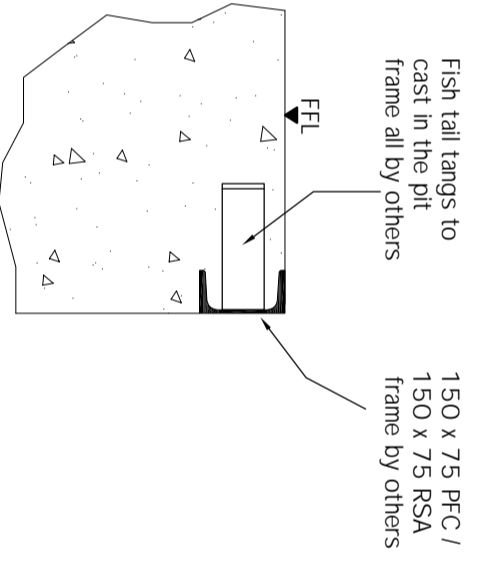
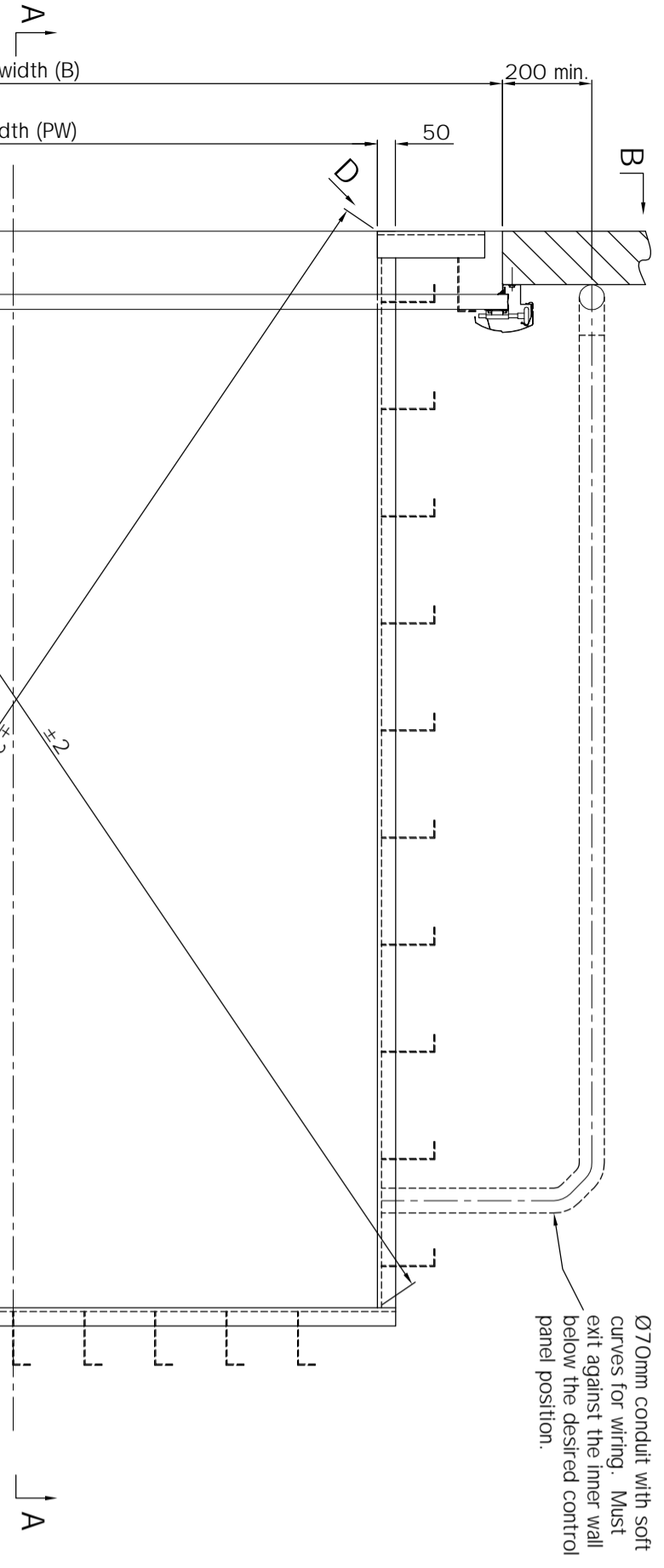
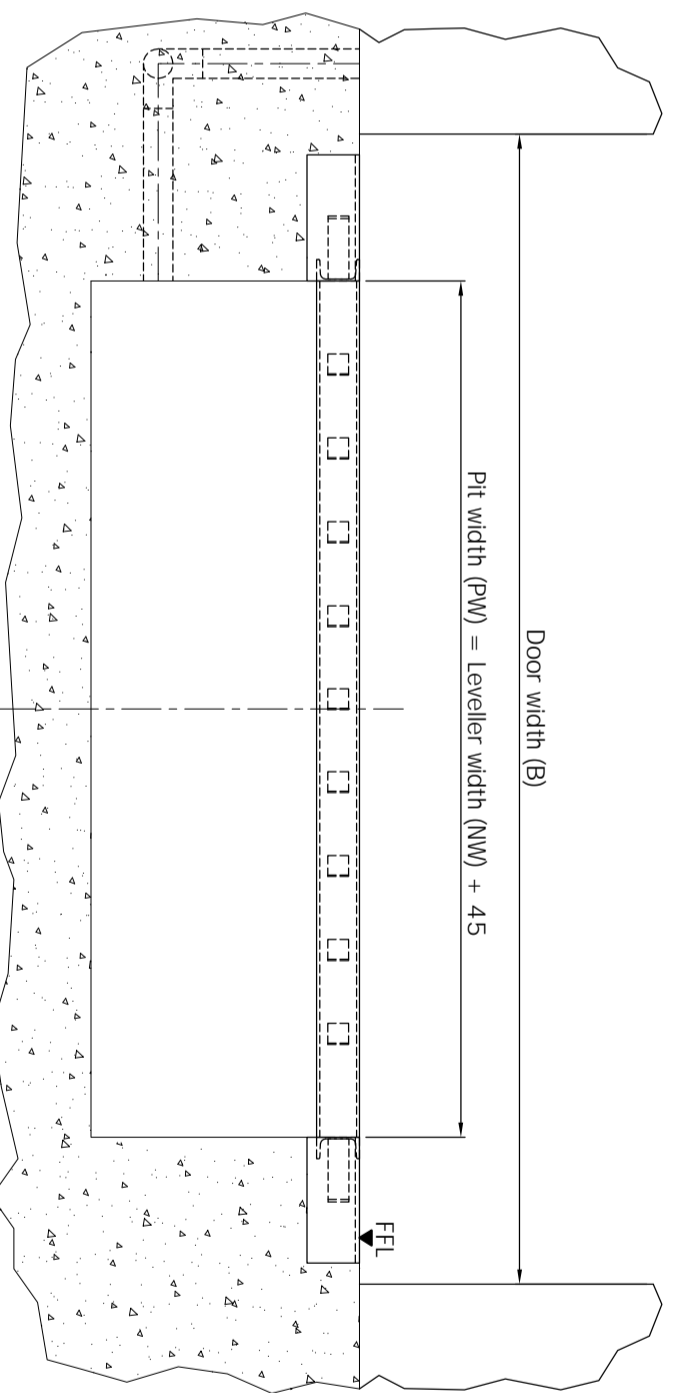
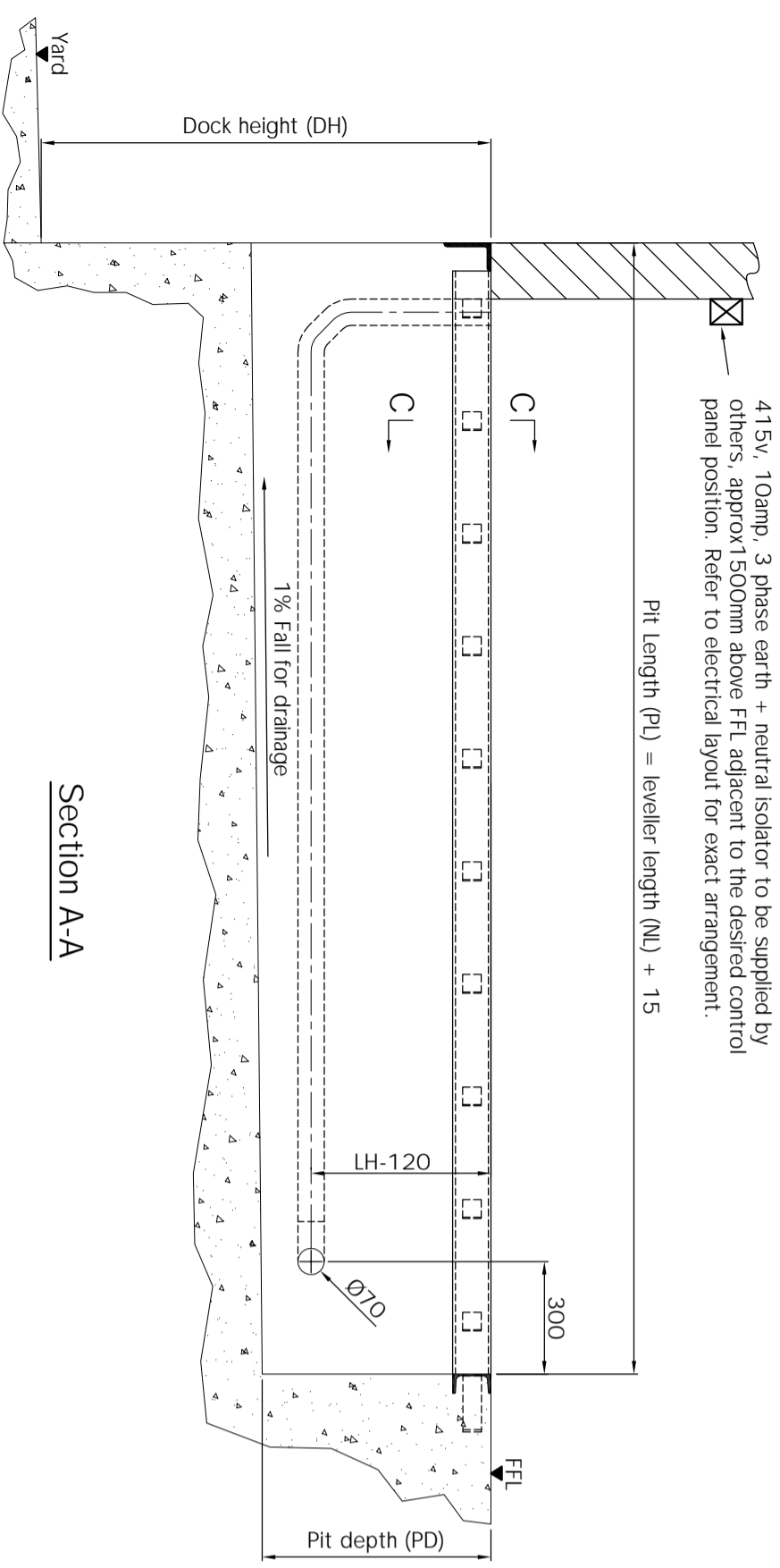


415v, 10amp, 3 phase earth + neutral isolator to be supplied by others, approx 1500mm above FFL adjacent to the desired control panel position. Refer to electrical layout for exact arrangement.



F - Horizontal impact load (calculated by others) must be absorbed by the structure

TOLERANCES +/- 3mm (DO NOT SCALE - if in doubt ask)

Pos.	Qty.	Leveller Dimensions			Pit Dimensions			
		DH	NL	NW	LH	PL	PW	PD

© COPYRIGHT AAES

Section A-A

Section B-B

Section C-C

View on D

Plan View

TITLE:

Pit setting out details for SwingDOCK leveller with 6T single axle load. Installation type F.

CLIENT:

SITE:

DRAWING STATUS

PRELIMINARY

FOR APPROVAL

CONSTRUCTION

AS BUILT

REV.	BY	DATE	COMMENT

DRAWN BY:

CHECKED BY:

DATE:

DRAWING NO.

REV.

SPECIFICATION: SwingDOCK

INSTALLATION TYPE: F

Pre-install frame

LIP MATERIAL: Steel  Aluminium

LIP LENGTH: 400mm  500mm

LIP OPTIONS:

Standard

Tapered (100mm each side)

Fold Down Segments (1 each side)

Bevelled (Steel Lip - 40mm)

Bevelled (Steel Lip - 100mm)

FINISHES:

Standard Ral 5010 - Blue

Other (specify Ral / BS colour)

Hot Dip Galvanized

ADDITIONAL OPTIONS:

EPDM Seals (to platform perimeter)

40mm Platform Insulation

Anti-slip Surface Protection

Noise Reduction

Low Temperature Oil

Environmental Oil

CONTROL PANEL:

950 L  950 LA

950 DL  950 DLA

950 DLS  950 DLSA

CONTROL OPTIONS:

Integrated Door Control

Integrated Shelter Control

Auto Leveller Retraction

BUFFER OPTIONS:

400x80x70 + 10mm Plate

500x250x90 + 15mm Plate

500x250x140 + 15mm Plate

Floating (EBF)

Height Adjustable (EBH)

NOTES:

ASSA ABLOY Entrance Systems Ltd  
Industrial Door and Docking Solutions  
7 Churchill Way . 35A Business Park . Chapelton . Sheffield . UK . S35 2PY  
Tel: +44 (0)114 257 4330 Fax: +44 (0)114 257 4399

**ASSA ABLOY**