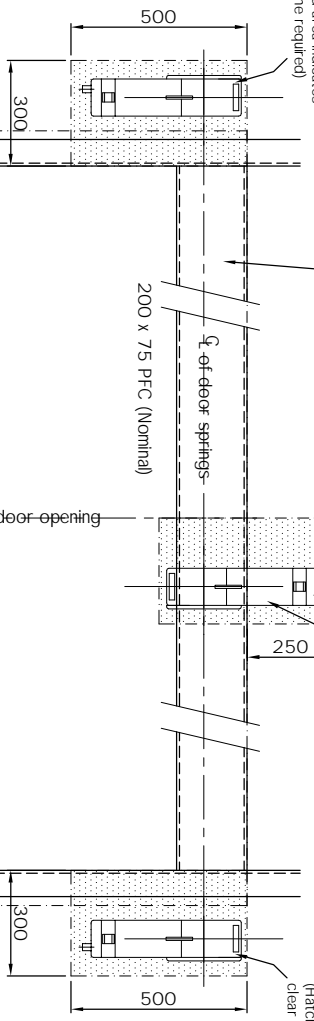


Higher level cross member required with min 200mm face where the opening width is over 3000mm or where the operator is mounted centrally.



INTERNAL VIEW OF DOOR OPENING

INTERNAL VIEW OF DOOR OPENING
Door tracks omitted for clarity

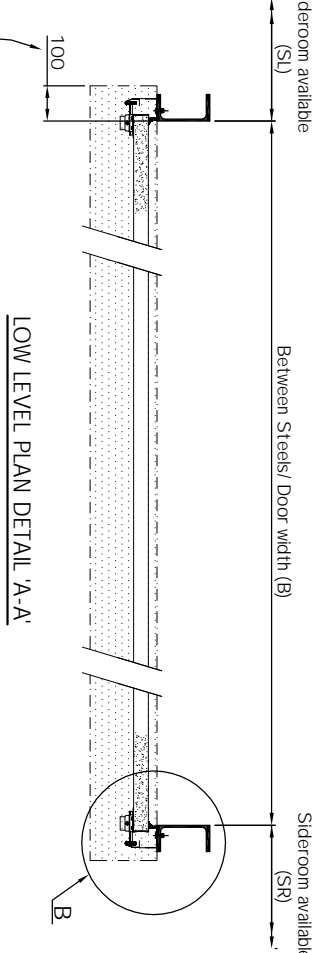
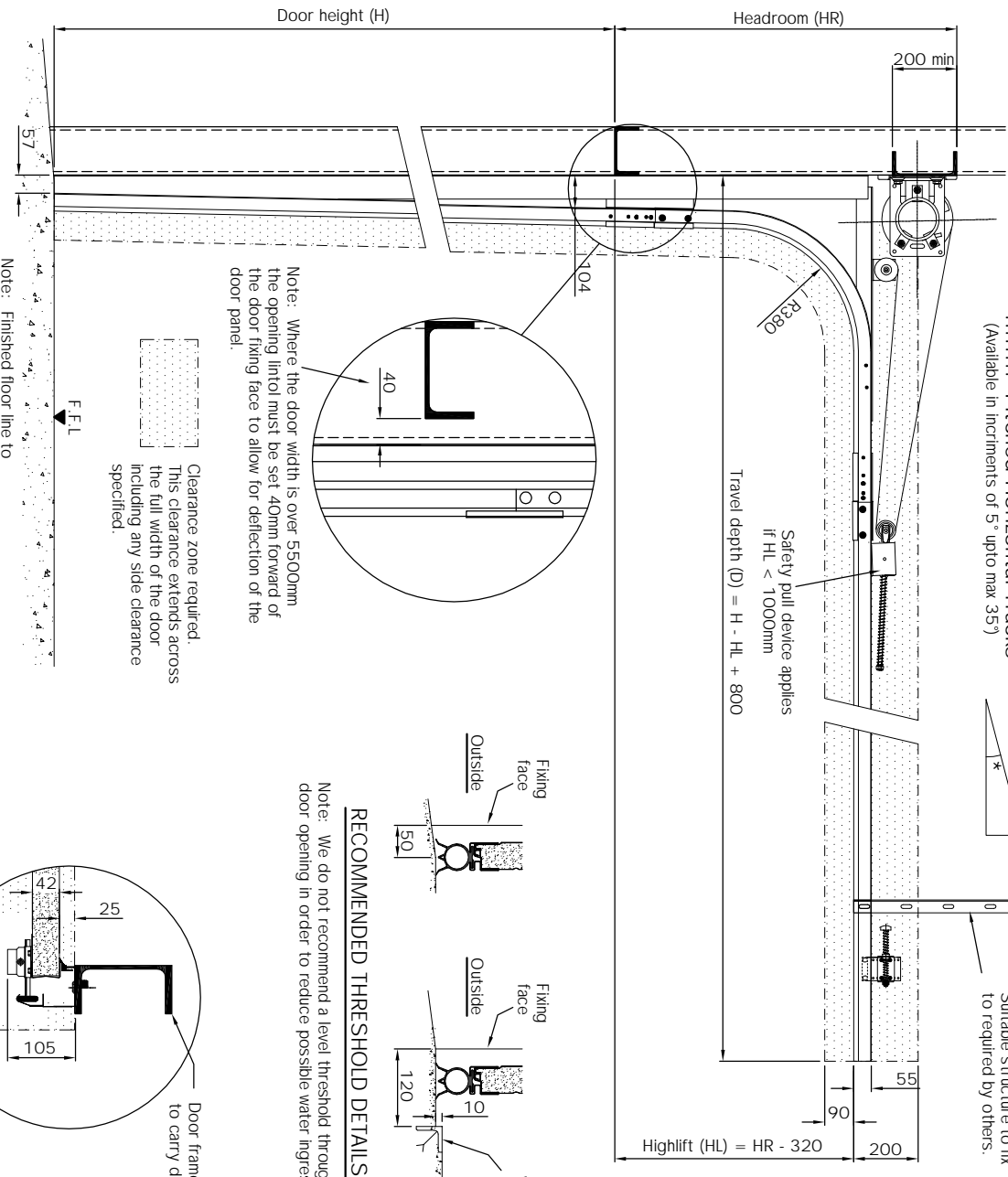
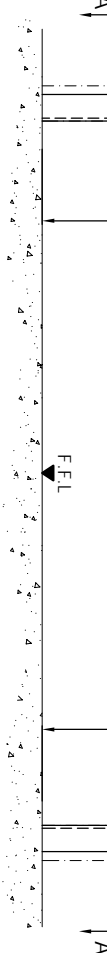
All steelwork to be by others in conjunction with the structural engineers design, calculations and specification

Note: All steel must have the internal fixing faces set flush in the same plane and be clear from projections, such as bolt heads.

All base plates must be kept clear of the internal face of the posts.

All secondary steelwork including mounting plates and suitable mounting surfaces for control equipment must be provided by others in line with our installation requirements

Delete motor & control panel as appropriate



Note:- Minimum clearance required to each side except where a lock interlock is required, then 150mm will apply at control panel side, also differs at operator location see elevation.

© COPYRIGHT AAES

TOLERANCES +/- 3mm (DO NOT SCALE - if in doubt ask)

Pos.	Qty.	B	H	HR	HL	D	SL	SR

ASSA ABLÖY

ASSA ABLÖY Entrance Systems Ltd
Industrial Door and Docking Solutions

7 Churchill Way .35A Business Park .Chapelton .Sheffield .UK .S35 2PY
Tel: +44 (0)114 257 4330 Fax: +44 (0)114 257 4399

TITLE: Setting out details for electric operated sectional overhead door with high lift hardware fitting to steelwork.

CLIENT:

DRAWING STATUS

PRELIMINARY

FOR APPROVAL

CONSTRUCTION

AS BUILT

REV.	BY	DATE	COMMENT

SPECIFICATION

- DOOR TYPE: OH1042FG P F
- OPERATION: CDM9 Motor
- CONTROL PANEL:
- 920 Panel (205x150x75 - Impulse up, deadman down)
- 930 Panel (205x150x75 - Impulse up & down, safety edge)
- 950 Panel (360x150x120 - Impulse up & down, safety edge)
- OPTIONS (930 / 950 panel only)
- Automatic closing (930 / 950 panel)
- Reversing a closing door (930 / 950 panel)
- Pull Rope (930 / 950 panel)
- PhotoCells (930 / 950 panel)
- Remote control (930 / 950 panel)
- Magnetic Loop (950 panel)
- Radar (950 panel)
- Traffic lights (950 panel)
- Warning lights (950 panel)
- Reduced opening (950 panel)
- Airlock (950 panel)

- FINISHES:
- Internal (Standard Ral 9002 - off white)
- Other (specify Ral / BS colour) _____
- External (Standard polyester options)
- Ral 3002 - Red Ral 1021 - Yellow
- Ral 5010 - Blue Ral 7016 - Grey
- Ral 9010 - White Ral 9006 - Silver
- Ral 9002 - Off white Ral 9007 - Grey
- Ral 6005 - Green
- Other (specify Ral / BS colour) _____

- WINDOWS:
- Panel (P) Option: Solid Bottom Panel DAOP Double Glazed Single glazed
- Sections: Glass

- PASSDOOR: (Viewed from inside)
- Left hand hung Right hand hung
- On left In Center On right
- LOCKING: Cylinder Lock
- Lockbolt

NOTES:

DRAWN BY:

CHECKED BY:

DATE:

DRAWING No. REV.